

# INSTALLATION INSTRUCTION

## Aether 3.5" IC Remodel Housing

HR-3LED-R15A

WAC LIGHTING  
Responsible Lighting®

### SAFETY INSTRUCTION

IMPORTANT: NEVER attempt any work without shutting off the electricity.

- Read all instructions before installing.
- System is intended for installation by a qualified electrician in accordance with the National Electrical Code and local regulations.
- Place the wall switch in the "OFF" position.
- Go to the main fuse box, or circuit breaker. Unscrew the fuse(s) or switch "OFF" the circuit breaker switch(es) that control the power to the space that you are working on.

### CAUTION:

All parts must be used as indicated in these instructions. Do not substitute any parts, leave parts out, or use any parts that are worn out or broken. Failure to follow this instruction could invalidate the ETL/cETL listing of this fixture.

### AVERTISSEMENT

IMPORTANT : COUPEZ L'ÉLECTRICITÉ AVANT TOUTE MANIPULATION.

- Lisez toutes les instructions avant d'installer.
- Système est destiné à être installé par un électricien qualifié en conformité avec le code national de l'électricité et les règlements locaux.
- Placez l'interrupteur mural en position d'arrêt (« OFF »).
- Accédez au panneau central de disjoncteurs ou de fusibles de votre demeure et placez l'interrupteur principal en position d'arrêt (« OFF »).

### MISE EN GARDE

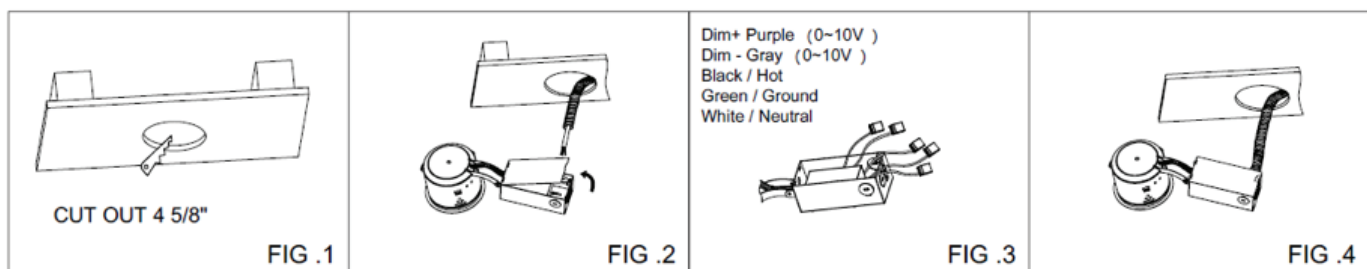
Toutes les pièces doivent être utilisées tel qu'il est indiqué dans ces instructions. Ne remplacez pas les pièces, n'en laissez pas de côté et ne les utilisez pas si elles sont usées ou brisées. Le non-respect de ces instructions peut annuler l'homologation ETL/cETL du luminaire.

### OVERVIEW:

Housing is Remodel IC, AIRTIGHT. Housing requires a trim for finished look. Check catalog for various trims choices.

### HOUSING INSTALLATION:

1. Cut out a hole 4 5/8" in the existing ceiling. Note: 1" inch maximum ceiling thickness. **Fig.1**
2. Pull the ceiling wire through the hole. **Fig.2**
3. Remove fixture junction box door and connect fixture wires to building wires: insert each supply wire into appropriate junction box connector. This fixture features electronic low voltage (ELV) or 0-10V dimming capabilities. To utilize ELV, wire black (line hot) and white (line neutral) in accordance to dimmer specifications. To utilize 0-10V dimming, wire purple (dim+), gray (dim-), black (line hot), white (line neutral) in accordance to dimmer specifications. Green fixture wire to ground. **Fig.3**  
Place all wiring and connectors back in junction box and replace the junction box's cover.
4. Place all wiring and connectors back in wiring box and replace junction box door. **Fig.4**



WAC Lighting  
www.waclighting.com  
Phone (800) 526.2588 • Fax (800) 526.2585

Headquarters/Eastern Distribution Center  
44 Harbor Park Drive • Port Washington, NY 11050  
Phone (516) 515.5000 • Fax (516) 515.5050

Western Distribution Center  
1750 Archibald Ave • Ontario, CA 91761  
Phone (800) 526.2588 • Fax (800) 526.2585

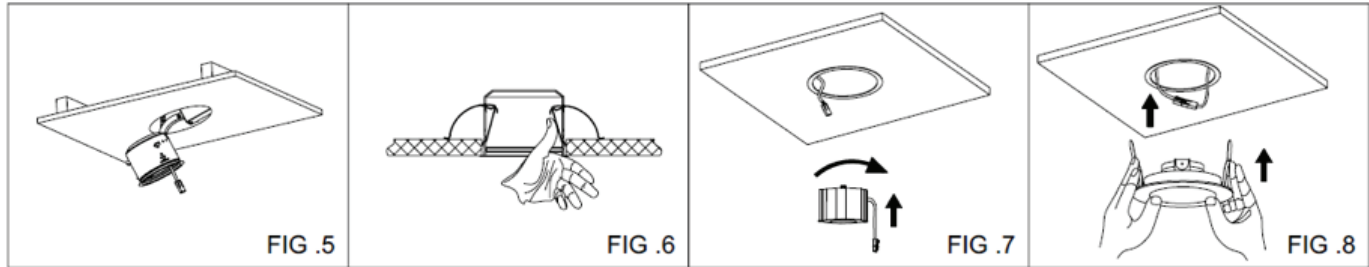
INSTALLATION INSTRUCTION  
**Aether 3.5" IC Remodel Housing**

HR-3LED-R15A

WAC LIGHTING  
 Responsible Lighting®

**HOUSING INSTALLATION:**

5. Push the housing up through the hole. **Fig.5**
6. Push clips to secure the fixture. **Fig.6**
7. Install light engine into the housing by rotating it clockwise onto stud. **Fig.7**  
 Connect light engine and housing power connectors, push the connectors into the housing. **Fig.8**
8. Raise the trim to housing, depress trim spring clips and push the trim assembly up until the trim ring is flush to the ceiling. **Fig.8**



**WIRING DIAGRAM:**

