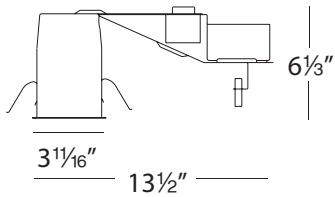
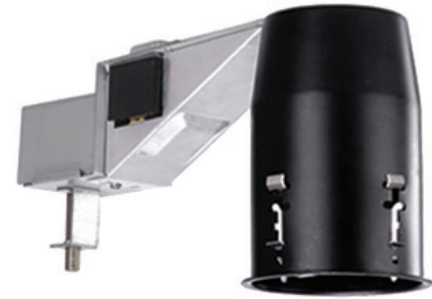


HR-301M

3" Low Voltage Remodel Housing

120V – Non-IC – Magnetic



PRODUCT DESCRIPTION

Low voltage remodel downlight housing with integral magnetic transformer.

FEATURES

- Cutout: 3 $\frac{3}{8}$ "
- Integral Magnetic Transformer
- Dimmable with magnetic low voltage dimmers
- 3" clearance on all sides when insulation is present
- J-Box and transformer accessible through ceiling
- Rated for branch and chain wiring
- UL and CUL Listed
- Suitable for damp locations
- Suitable for use in "shallow" joist installations

ORDER NUMBER

HR-301M

COMPATIBLE TRIMS

Model #	Description	Finish (where there is a slash (/) the letters correspond as: interior finish/exterior finish)
HR-D321	Open Reflector, 25° Adjustment from Vertical	Specular Clear/Brushed Nickel (SC/BN), Specular Clear/White (SC/WT)
HR-D324	Basic Baffle, 25° Adjustment from Vertical	White/White (WT/WT)
HR-D325	Pin Hole	Black/White (BK/WT), White/White (WT/WT)
HR-D327	Gimbal Ring, 25° Adjustment from Vertical	Brushed Nickel (BN), White (WT)
HR-D329-S	Shower Light w/ Clear Flat Lens, 25° Adjustment from Vertical	White (WT)

See individual trim spec sheets for complete information.

WAC Lighting

www.waclighting.com
Phone (800) 526.2588 • Fax (800) 526.2585

Headquarters/Eastern Distribution Center

44 Harbor Park Drive • Port Washington, NY 11050
Phone (516) 515.5000 • Fax (516) 515.5050

Western Distribution Center

1750 Archibald Avenue • Ontario, CA 91760
Phone (800) 526.2588 • Fax (800) 526.2585

WAC LIGHTING

Responsible Lighting®

Fixture Type:

Catalog Number:

Project:

Location:

SPECIFICATIONS

Construction: Housing is 20 gauge steel, painted black. Frame, junction box and hanger bars are heavy gauge galvanized steel. Electrical component within can is a bi-pin ceramic socket with 18 gauge teflon insulated wires with fiberglass sleeves.

J-Box: Three 1/2" knockouts provided for wire entry and exit.

Transformer: Magnetic transformer for 12V MR16 lamps, 50W maximum. 120V input transformer. Compatible with SORAA MR16 LED.

Mounting: Three heavy gauge inner retention clips push out on to ceiling or other mounting surface to firmly hold housing in place. Accommodates surface thickness of up to 3/4".

Rating: Non-IC: insulation must be kept at least 3" away from the housing.

Standards: UL & CUL Listed

