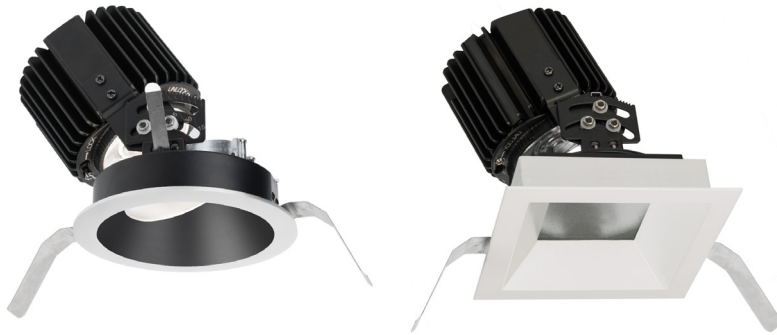


# R4RAT, R4SAT

4.5" Volta - Adjustable Trim

# WAC LIGHTING

Responsible Lighting®



Fixture Type:

Catalog Number:

Project: \_\_\_\_\_

Location: \_\_\_\_\_

## PRODUCT DESCRIPTION

Volta LED downlight series represents an innovation in design and technology for architectural lighting. This high lumen and adaptable family of fixtures with a comprehensive set of round and square fittings, affords a sustainable solution for commercial, corporate, and upscale residential applications.

## FEATURES

- Dual finishes are single piece, no physical seams
- Center beam alignment retained throughout adjustment range
- 0-45° vertical and 365° horizontal lockable hot aiming
- Indexed vertical scaling for precise and accurate alignment
- Integral patterned tempered trim lens included standard
- Compatible with a wide range of accessories
- 5 year WAC Lighting product warranty

## SPECIFICATIONS

**Construction:** Durable die-cast self flanged aluminum construction

**Input:** Universal 120 - 277V AC 50/60 Hz

**Dimming:** Electronic Low Voltage (ELV): 100%-5%  
0-10V: 100%-0%  
Lutron Hi-Lume 1% Fade-to-Black option

**Light Source:** High output 3-step Mac Adam Ellipse COB  
Rated life of 50,000 hours at L70

**Mounting:** Heavy gauge retention clips support trim firmly. Safety cabling standard.  
Ceiling cut out (Round): Ø 5 1/8"  
Ceiling cut out (Square): 5 1/8" x 5 1/8"  
Accommodates ceiling thickness of 1/2" - 1" up to 45°, 1 1/2" up to 35°

**Finish:** Electrostatically powder coated White, Black, Enamel coated Haze, Plated and brushed copper Bronze.

**Standards:** ETL & cETL Wet location Listed, Title 24 JA8-2016 Compliant

## TRIMS (ORDER HOUSING SEPARATELY)

Model	Beam Angle	Reference Output*			Color Temp	CRI	Finishes	Reflector/Trim
		Lumens	CBCP	Lumens/Watt				
 <b>R4RAT</b> <i>Round</i>	<b>S</b> 15°	1215	10910	56	<b>827</b> 2700K 85 <b>927</b> 2700K 90 <b>830</b> 3000K 85 <b>930</b> 3000K 90 <b>835</b> 3500K 85 <b>840</b> 4000K 85	<b>BK</b> Black <b>BKWT</b> Black/White <b>CB</b> Copper Bronze <b>HZ</b> Haze <b>HZWT</b> Haze/White <b>WT</b> White		
	<b>N</b> 25°	2340	9250	69				
	<b>F</b> 40°	2085	4720	63				
 <b>R4SAT</b> <i>Square</i>	<b>S</b> 15°	1140	9175	53				
	<b>N</b> 20°	1960	8340	57				
	<b>F</b> 40°	1770	4495	52				

\*Reference output shows **830**(85CRI 3000K) trim with **36** housing. Use multiplier table below to determine the output for other combinations.

Multiplier	TRIM					
	827	927	830	930	835	840
<b>HOUSING 36</b>	0.95	0.81	1.00	0.86	1.05	1.07
<b>HOUSING 25</b>	0.66	0.56	0.69	0.59	0.73	0.74
<b>HOUSING 15</b>	0.43	0.37	0.45	0.39	0.48	0.49

R4    AT-    -   

Example: **R4RAT-5827-HZWT**

Please see next page for housing units(required)

wacighting.com  
Phone (800) 526.2588  
Fax (800) 526.2585

Headquarters/Eastern Distribution Center  
44 Harbor Park Drive  
Port Washington, NY 11050

Central Distribution Center  
1600 Distribution Ct  
Lithia Springs, GA 30122

Western Distribution Center  
1750 Archibald Avenue  
Ontario, CA 91760

# R4RAT, R4SAT

## 4.5" Volta - Adjustable Trim

# WAC LIGHTING

Responsible Lighting®

### HOUSINGS (REQUIRED)

	Model	Power*	S	N, F	Rating	Driver	Emergency Backup
<b>Round New Construction</b> 	<b>R4RNT</b> Airtight	<b>15</b>	10W	15W	IC rated	<b>DEFAULT</b>	ELV, 0-10V Lutron Hi-Lume 1% <b>EM</b>
	<b>R4RCT</b> Airtight, Chicago Plenum	<b>25</b>	15W	23W	IC rated	<b>L1</b>	
	<b>36</b>	22W	34W	Non-IC			
<b>Square New Construction</b> 	<b>R4SNT</b> Airtight	<b>15</b>	10W	15W	IC rated	<b>DEFAULT</b>	ELV, 0-10V Lutron Hi-Lume 1% <b>EM</b>
	<b>R4SCT</b> Airtight, Chicago Plenum	<b>25</b>	15W	23W	IC rated	<b>L1</b>	
	<b>36</b>	22W	34W	Non-IC			
<b>Remodel</b> 	<b>R4BRT</b> Round or Square	<b>15</b>	10W	15W	Non-IC	<b>DEFAULT</b>	ELV, 0-10V N/A
		<b>25</b>	15W	23W	Non-IC		
		<b>36</b>	22W	34W	Non-IC		

#### Field Replaceable Driver

<b>D-R4N-15</b>	Driver for 15W New Construction Hsg
<b>D-R4N-25</b>	Driver for 23W New Construction Hsg
<b>D-R4N-36</b>	Driver for 34W New Construction Hsg

\*Power consumption depends on beam angle of the trim.

### R4 \_\_\_\_\_ - \_\_\_\_\_

Example: **R4RNT-15** or **R4RNT-15EM** (with Emergency backup battery)

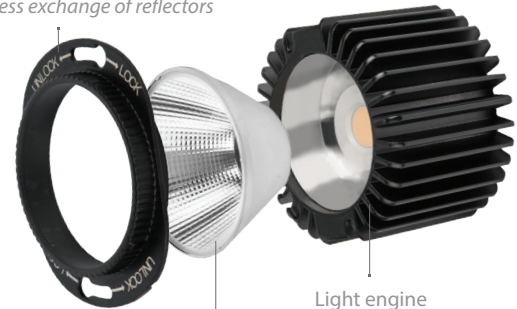
### FIELD CHANGEABLE GLARE CONTROL AND OPTIC SYSTEM

**Note:** Maximum 35° vertical adjustment with accessory use

Accessory holder  
Holds up to two lenses or  
One lens and one glare control



Optical cartridge  
Allows tool-less exchange of reflectors



Reflector  
For narrow flood, flood, and wide flood.  
Spot distribution features dedicated module.

#### Accessory holder

##### LENS-73-HLD

Required to hold lens and glare control accessories

#### Glare control accessories

##### LENS-73-HCL

Honeycomb Louver

##### LENS-73-CRL

Cross Louver

##### LENS-73-SNOOT

Snoot

#### Lens

##### LENS-73-AMB

Amber lens

##### LENS-73-RED

Red lens

##### LENS-73-FR

Frosted lens

##### LENS-73-SPR

Spread lens

##### LENS-73-BEL

Beam Elongating

#### Interchangeable Reflector

##### REF-R4-N

Narrow Flood beam reflector

##### REF-R4-F

Flood beam reflector

##### REF-R4-W

Wide beam reflector

waclighting.com

Phone (800) 526.2588

Fax (800) 526.2585

Headquarters/Eastern Distribution Center

44 Harbor Park Drive

Port Washington, NY 11050

Central Distribution Center

1600 Distribution Ct

Lithia Springs, GA 30122

Western Distribution Center

1750 Archibald Avenue

Ontario, CA 91760

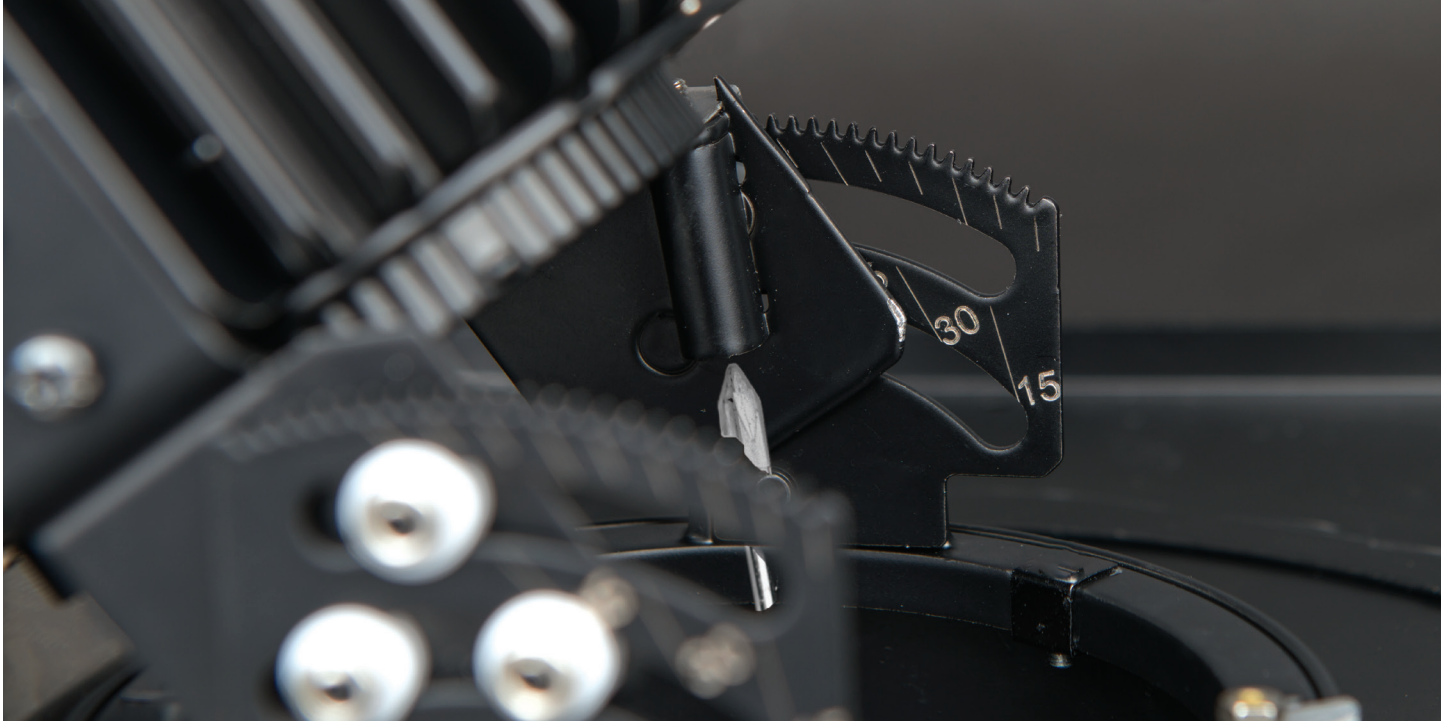
# R4RAT, R4SAT

4.5" Volta - Adjustable Trim

# WAC LIGHTING

Responsible Lighting®

## FIELD CHANGEABLE AIMING



0 - 45° vertical lockable hot aiming



365° horizontal lockable hot aiming

[wacighting.com](http://wacighting.com)

Phone (800) 526.2588

Fax (800) 526.2585

Headquarters/Eastern Distribution Center

44 Harbor Park Drive

Port Washington, NY 11050

Central Distribution Center

1600 Distribution Ct

Lithia Springs, GA 30122

Western Distribution Center

1750 Archibald Avenue

Ontario, CA 91760